



# EAST CENTRAL COLLEGE



## *Fine & Performing Arts*

2024

PATRONS OF THE  
*Arts*

2025



**Dr. Jon Bauer**  
ECC President



**Dr. Robyn  
Walter**  
Vice President,  
Academic Affairs



**Scott  
Breckenkamp**  
Foundation  
Board President



**Joel Doepker**  
Vice President,  
External Relations



**Sandy Lucy**  
Vice President,  
Foundation



**Sarah Leassner**  
Vice President,  
Student  
Development



**Bridgette Kelch**  
Foundation  
Executive Director



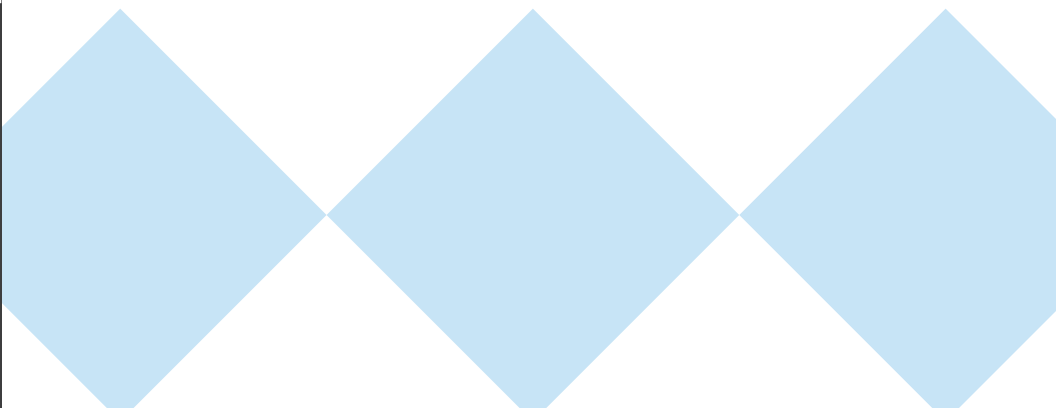
**Cassidy Desmond**  
Foundation Event &  
Program Coordinator



# Welcome

to East Central College's Fine & Performing Arts program, a cultural resource dedicated to presenting, developing, and advancing the best in performing arts and arts education. Through the years, the Patrons of the Arts program has provided funds for hundreds of cultural experiences for thousands of students and community members.

This season we will present world-class artists along with phenomenal student performances to engage and inspire you. All of this would not be possible without ECC's Fine and Performing Arts faculty, staff, and the support of the Patrons of the Arts.



## Film & Lecture • 4

The ECC Film and Lecture Series brings acclaimed documentaries and narrative films, scholars, authors, journalists, and poets to campus throughout the year. The series is designed to enhance essential components of education by providing audiences with avenues for exercising critical thought, appreciating various forms of artistic expression, and deepening cultural understanding.



## Art • 6

The ECC Art Gallery's mission is to enhance education and to culturally enrich the daily life of art and design majors; ECC students, faculty, and staff; and the broader community. The Art Gallery hosts exhibitions that may pose questions or offer a new and differing point of view, thus serving as an educational resource. The artwork in a given exhibit may inspire the viewer in terms of content, beauty, or materials, thus acting as a place of cultural enrichment. By creating a place of repose or mental uplift, the Art Gallery serves to enhance campus life.



## Music • 8

The ECC Music Department maintains a standard of excellence in the curricula and programs it offers. Students are inspired by solo and ensemble performances, festivals, workshops, and a guest artist series. The educational and cultural opportunities provided by the music department enrich both the College and community. ECC is an accredited member of the National Association of Schools of Music.



## Theatre • 14

The ECC Theatre Department provides students with academic training and practical experience in a nurturing yet challenging environment, as well as serving as a cultural touchstone for the surrounding community. The department produces multiple mainstage shows per year, affording performance and learning opportunities.



## Social Sciences • 16

Community members have the opportunity to make a connection between the struggles of their loved ones and the community resources available to help them. Our presenters are afforded an opportunity to help the ECC community gain a better understanding of their mission and purpose, in hopes of making better connections to enhance and improve their lives.

## Culinary • 17

The ECC Culinary Arts Department is accredited through the American Culinary Federation and offers our students a top-tier look at skills and standards expected in the Culinary Industry today. Instruction is given by ACF-certified faculty and staff, and curriculum is enhanced by guest speakers and demonstrations from local chefs and industry peers.



## International Education Week • 18

International Education Week (IEW) is an annual event celebrated worldwide to promote and highlight the importance of international education and cultural exchange. East Central College participates in the celebration of IEW by hosting activities and events that encourage people to explore and engage with diverse cultures, languages, and perspectives to broaden their horizons and develop a global mindset.



## Foundation Events • 19

The East Central College Foundation hosts several events each year that Patrons are invited and encouraged to attend. You won't want to miss any of these exciting and fulfilling events!



## When does the Patrons year start and end?

The Patrons season runs from August 1 to July 31.

## Who do I notify if my contact information changes or if I would like to be added to the Patrons mailing list?

To ensure you receive all mailings and email updates, please contact the Foundation Office by emailing: [foundation@eastcentral.edu](mailto:foundation@eastcentral.edu) or by calling: 636-584-6506 to let us know of any changes.

## How do I purchase my tickets?

Tickets can be ordered for each individual performance or for the entire season. Reserve your tickets with the Foundation Office at 636-584-6506 or by emailing [foundation@eastcentral.edu](mailto:foundation@eastcentral.edu).

## Where do I pick up my tickets?

Tickets can be: emailed to you to print, brought digitally to the event or "will call" tickets can be picked up at the box office located in the theatre lobby or in the lower-level lobby on the first floor on the evening of the event.

## Am I allowed to share my tickets?

Yes, we encourage our Patrons to let others use their tickets if they are unable to attend a performance. You can order tickets from the Foundation Office and print them to give to your guest.

## Who is the correct person to call if I have ticket questions?

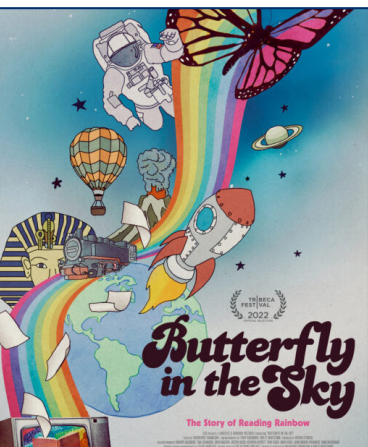
Ticket questions should be directed to the Foundation Office at 636-584-6506.

## Where are performances held?

Unless otherwise noted, all theatre productions, concerts, films, and lectures are held in the John Edson Anglin Performing Arts Center.

**Sylvia Sellers**  
Performing Arts  
Center Manager





**Documentary: “Butterfly in the Sky”**

September 12 • 6 p.m.

Butterfly in the Sky tells the story of Reading Rainbow, the educational show promoting literacy that LeVar Burton hosted for 23 seasons. The new documentary chronicles the journeys of broadcasters, educators and filmmakers who believed television could inspire a lifelong love of reading.

**Film: “Night of the Living Dead”**

October 8 • 6 p.m. in HH 286

Night of the Living Dead (1968), directed by horror master George A. Romero, is a great story of independent cinema: a midnight hit turned box-office smash that became one of the most influential films of all time.

**Film: “Rocky Horror Picture Show”**

**With Flustered Mustard Live**

**Cast Performance**

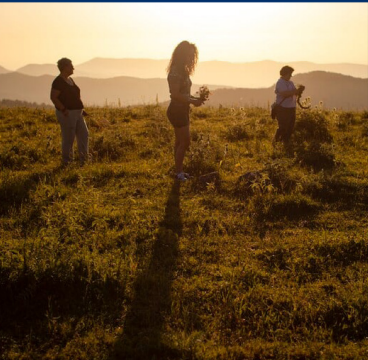
October 24 • 6 p.m.

In this cult classic, sweethearts Brad (Barry Bostwick) and Janet (Susan Sarandon), stuck with a flat tire during a storm, discover the eerie mansion of Dr. Frank-N-Furter (Tim Curry). Brad and Janet meet a houseful of wild characters, including a rocking biker (Meat Loaf) and a creepy butler (Richard O’Brien). Ticketed event.

**Documentary: “There Was, There Was Not”**  
**International Education Week**

November 20 • 6 p.m.

In a disputed territory between Armenia and Azerbaijan, a painter invites four women into her studio—a politician, an Olympic-hopeful athlete, a domestic violence activist, and a woman who disarms land mines for a living. Through intimate conversations, each woman shares their personal hardships, as well as their imaginations, desires and dreams for the future.



**Film: “The Holdovers”**

December 10 • 6 p.m. in HH 286

A curmudgeonly instructor at a New England prep school remains on campus during Christmas break to babysit a handful of students with nowhere to go. He soon forms an unlikely bond with a brainy but damaged troublemaker, and with the school’s head cook, a woman who just lost a son in the Vietnam War.



**Annual MLK Celebration**

January 26 • 3 p.m.

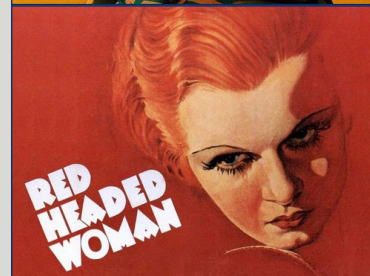
Hosted by Neighbors United - Undoing Racism



**Film: “Shirley”**

February 6 • 6 p.m. in HH 286

This biographical film tells the story of Shirley Chisholm as she makes a trailblazing run for the 1972 Democratic presidential nomination after becoming the first Black woman elected to Congress.



**Film: “Red-Headed Woman”**

March 26 • 6 p.m.

Red-Headed Woman is a 1932 American pre-Code romantic comedy film, produced by Metro-Goldwyn-Mayer, based on the 1931 novel of the same name by Katharine Brush, and a screenplay by Anita Loos. It was directed by Jack Conway and stars Jean Harlow as an ambitious career woman.



**Annual Poetry Reading**

April 24 • 7 p.m. in HS 100

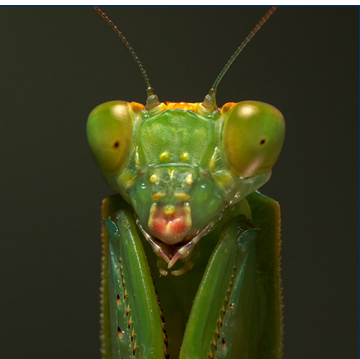
Co-hosted with the English Department

**Leigh Kellmann Kolb**

Associate Professor, English & Journalism



Unless noted, all events are held in the Theatre.



### Reagan Pufall, “Mantadeans”

June 3 - August 15

In this series of photographs of live mantises, Reagan Pufall invites the viewer to gaze closely at these inhuman creatures. The more we look, the more we see similarities between ourselves and these “alien” beings.



### Beth Livensperger, “All My Mansions”

August 26 - September 19

Beth Livensperger creates an installation of work on paper, tailored specifically to ECC’s Art Gallery space. This body of work grew out of her experiences with strong female colleagues: mentors, competitors, friends, and advocates. The large-scale collages depict women navigating the banal, yet psychologically charged, space of office interiors.



### Chris Troutman, “Giant-Size Comics”

September 30 - October 24

The dilemma of how to use drawing and painting media to resolve competing interests in the human figure, urban and domestic spaces, pictorial depth, passage of time, narrative, and dynamic composition influenced by art history, contemporary art, and comics, were what initially motivated Chris Troutman’s artwork. Later, juxtaposing imagery from the US and Japan, the two places he lives each year, has created the potential for content that compares social and cultural differences and presents audiences with a global perspective, which has become more relevant in contemporary US culture.



### Mid-Missouri Fine Arts Society, Annual Members’ Exhibition

November 4 - 29

Reception: November 8, 5-7 p.m.

Mid-Missouri Fine Arts Society, an organization of local artists, annually presents their artworks at ECC. Members work in a variety of media, including pastels, graphite, watercolor, oil paint, photography, and ceramics. The Mid-Missouri Fine Arts Society began in 1974 to promote and contribute to the interest in fine arts. Members of this local organization are active artists and art enthusiasts and work in a variety of media, including pastels, graphite, watercolor, oil paint, photography, and ceramics.



### ECC Art & Design Faculty Show

January 28 - February 20

From photography to drawing, from digital art to painting, from design to ceramics, ECC Art & Design Faculty inspire students and the community with their view on the world. Visit the gallery to see the world through our art faculty’s eyes.



### Scott Espeseth, “Dwell Time”

March 3 - 27

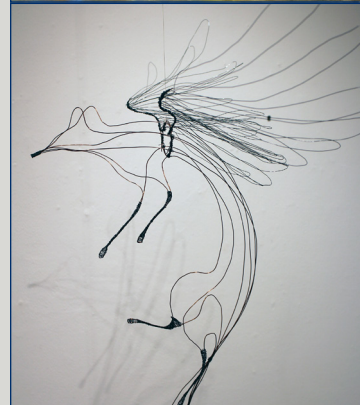
Scott Espeseth’s works are drawings, made with ivory black watercolor on paper. Watercolor pushes back on obsessive tendencies, requiring compromises, and not lose the forest for the trees. The drawings are inspired by chance encounters with objects, spaces, or events that trigger moments of clarity, where they suddenly appear to be intensely strange, or intensely beautiful.



### Four Rivers Conference, Annual High School Art Competition

March 31 - April 11

Come see the best of this year’s artwork from our area high school students!



### ECC Art & Design Students, Annual Exhibition

April 23 - May 7

Reception: May 1

End the school year by visiting this showcase of our ECC art students’ work. Chosen from numerous entries, the works in the show were selected because of the quality of the works and the ideas engaged in the work. Come join us to celebrate the hard work and accomplishments of our students!

**Jennifer Higerd**  
Assistant Professor, Art & Gallery Curator



Unless noted, all events are held in the Art Gallery.



### Season Kickoff Music Festival

August 23 • 5 - 8:30 p.m.

Come join us for an outdoor kickoff concert for our 23rd concert season. The music festival features Woodshine, Funky Butt Brass Band, and Pamwe Marimba. The festival promises an exciting evening of great music and is free and open to the public.



### Pop!Pop!Pop! Orchestra with Anita Jackson: The Music of Carole King, Joni Mitchell, and Stevie Nicks

September 6 • 7:30 p.m.

Pop!Pop!Pop! Orchestra celebrates the most dominant musical media of the past 50 years, popular music, through the power of live string performances. Come for a show celebrating three brilliant singer/songwriters featuring St. Louis icon, vocalist Anita Jackson!



### Arianna String Quartet

September 20 • 7:30 p.m.

"Mastery of the scores and absolute unity of interpretive purpose"--Spokesman-Review. "Quartet playing doesn't get much better than this"--Chicago Tribune. The members of the Arianna String Quartet serve on the faculty at the University of Missouri-St. Louis as professors of violin, viola, and cello. The ASQ also presents an interdisciplinary performance and lecture series "First Mondays with the ASQ," at KWMU, St. Louis Public Radio.



### Lovestruck Balladeers

October 18 • 7:30 p.m.

The Lovestruck Balladeers enchant audiences with their masterful performances and inspired repertoire of ragtime, jazz, and beautiful songs from around the world. Together or on their own paths, this stellar band of traveling musicians has traversed the country and the globe, carrying traditional styles into modern times.



### Bistro and Brewer: If Music Be the Food of Love

November 8 • 6 p.m. Bistro; 7 p.m. Concert

Grammy award winning soprano Christine Brewer and the ECC Culinary Department present an unforgettable evening of food and beautiful music. Christine Brewer was named one of the top 20 sopranos of all time (BBC Music). The seating is limited, please reserve your tickets early.



### David Halen, Bjorn Ranheim, and Jennifer Judd in Concert

January 24 • 7:30 p.m.

It is our great pleasure to once again welcome St. Louis Symphony Orchestra concertmaster David Halen and acclaimed SLSO cellist Bjorn Ranheim with pianist Jennifer Judd for an evening of spectacular music. Halen, Ranheim and Judd will perform trios by Rachmaninoff and Brahms.



### Vivaldi's Four Seasons

April 4 • 7:30 p.m.

Led by Baroque violin soloist, Daniel Lee, Early Music Missouri brings Antonio Vivaldi's Four Seasons to the ECC stage. Probably the best-known program music in the classical repertoire, these concerti depict roiling streams, wintery blasts, dancing peasants, baying dogs and more. Performed by a chamber ensemble playing period instruments, this concert offers listeners an exciting introduction to the sounds of Vivaldi's musical world. The ECC Choir will join singers and instrumentalists from Early Music Missouri for a performance of excerpts from Antonio Vivaldi's Gloria.



### Twinspeak: Alan and Mark Ferber Group

April 25 • 7:30 p.m.

Multiple GRAMMY-nominated/winning trombonist-composer-arranger Alan Ferber has been called "one of the jazz world's premier composers and arrangers for larger groups" by All About Jazz NY. His twin brother, drummer Mark Ferber, can be heard on over 200 recordings. This star-studded group will bring an amazing finale concert to the Jazz Festival.

**Dr. Jennifer Judd**  
Professor, Music & Coordinator





**Miguel Espinoza Fusion**  
September 27 • 4 p.m. • HH 105

Miguel Espinoza is hailed as one of the best flamenco guitarists in the world. Described by Guitar Player Magazine as “mesmerizing”. “Miguel Espinoza Fusion is world class global chamber music making that explodes the parameters of style, yet ever remains close to the heart.”- David Balakrishnan.



**Javor Bracic Piano Recital**  
November 1 • 5 p.m. • HH 105

The Croatian pianist Dr. Javor Bracic was praised by New York Concert Review for “deep, genuine musicianship and an outstanding technique” at his Carnegie Hall debut recital. He has given recitals in five continents. Dr. Bracic is on the faculty of the University of Connecticut and Queens College.



**Parisian Tenebrae Lessons**  
February 7 • 4 p.m. • HH 105

Early Music Missouri presents a concert of intimate and moving French vocal music for the Lenten season. Tenebrae Lessons, sung in the final week of Lent, were heard in churches and chapels across Europe. This concert feature some of the finest Baroque Tenebrae Lessons by Marc-Antoine Charpentier and Louis-Nicolas Clérambault sung by a trio of sopranos accompanied by period instruments.



**Faculty Recital**  
March 7 • 4 p.m. • Theatre

Members of the ECC Music Department faculty present a dynamic concert that includes works by a diverse array of composers and styles. Please join us to hear the very talented ECC Music Department faculty in this popular recital.



**Kaffee and Kuchen Concert**  
April 11 • 4 p.m. • Theatre Lobby

Join pianist Melanie Lina and her husband Hank of Just Hank’s Coffee for a springtime ‘kaffee und kuchen’ concert--the perfect Friday afternoon treat starting with coffee and cake served in style by Hank, followed by a delightful set of solo piano works, as well as piano 4-hand selections, in which Melanie will be joined by her friend, pianist Jennifer Judd.

**Aaron Bounds**  
Assistant Professor of Music & Band Director



**Ensembles**

**ECC Band Concert**  
October 8 • 7 p.m.

**ECC Bands Concert**  
March 4 • 7 p.m.

**College Choirs Concert**  
October 17 • 7 p.m.

**College Choirs Concert**  
March 11 • 7 p.m.

**ECC Bands Concert**  
December 3 • 7 p.m.

**POPS Concert**  
May 9 • 6 p.m.  
Washington Fairgrounds

**Christmas Celebration - College Choirs**  
December 6  
Location TBD

**College Choirs Concert**  
May 13 • 7 p.m.

**Festivals**

**Piano Sonatina and Violin Festival**  
February 1 - 2

**Palen Band Days**  
March 13 - 14

**MSHSAA Solo/ Ensemble**  
March 7 - 8

**MSHSAA Large Ensemble Festival**  
March 27 - 28

**Midwest Sheet Music Choral Festival**  
March 11

**Jazz Festival**  
April 24 - 25

Unless noted, all events are held in the ECC Theatre.

**Dr. Timothy Sexton**  
Instructor of Music & Choral Director



**JUNE**

- **Reagan Pufall “Mantadeans”**  
June 3 - August 15

**JULY**

- **YOU'RE A GOOD MAN, CHARLIE BROWN**  
July 18 - 21

**AUGUST**

- **Season Kickoff Music Festival**  
August 23
- **Beth Livensperger “All My Mansions”**  
August 26 - September 19

**SEPTEMBER**

- **Pop Pop Pop Orchestra with Anita Jackson**  
September 6
- **Documentary: “Butterfly in the Sky”**  
September 12
- **Arianna String Quartet**  
September 20
- **Miguel Espinoza Fusion**  
September 27
- **Chris Troutman “Giant-Size Comics”**  
September 30 - October 24

**OCTOBER**

- **NIGHT OF THE LIVING DEAD**  
October 3 - 6
- **ECC Band Concert**  
October 8
- **Film: “Night of the Living Dead”**  
October 8
- **College Choirs Concert**  
October 17
- **Domestic Violence Awareness Forum**  
October 17

- **Lovestruck Balladeers**  
October 18
- **Film: “Rocky Horror Picture Show”**  
October 24

**NOVEMBER**

- **Javor Bracic Piano Recital**  
November 1
- **MMFAS, Annual Members’ Exhibition**  
November 4 - 29  
Reception: November 8
- **Bistro & Brewer: If Music Be the Food of Love**  
November 8
- **International Education Week**  
November 14 - 18
- **International Day Festival**  
November 16
- **Documentary: “There Was, There Was Not”**  
November 20

**DECEMBER**

- **ECC Band Concert**  
December 3
- **College Choirs Christmas Celebration**  
December 6
- **Film: “The Holdovers”**  
December 10
- **Cocktails & Cold Reads: MRS. BOB CRACHIT’S WILD CHRISTMAS BINGE**  
December 12

**JANUARY**

- **Halen, Ranheim, and Judd**  
January 24
- **Annual MLK Celebration**  
January 26
- **ECC Art & Design Faculty Show**  
January 28 - February 20

**FEBRUARY**

- **Piano Sonatina and Violin Festival**  
February 1 - 2
- **Film: “Shirley”**  
February 6
- **Parisian Tenebrae Lessons**  
February 7
- **THE LIGHTNING THIEF: THE PERCY JACKSON MUSICAL**  
February 20 - 23

**MARCH**

- **Scott Espeseth “Dwell Time”**  
March 3 - 27
- **ECC Band Concert**  
March 4
- **Faculty Recital**  
March 7
- **MSHSAA Solo/ Ensemble Festival**  
March 7 - 8
- **College Choirs Concert**  
March 11
- **Midwest Sheet Music Choral Festival**  
March 11
- **College Choirs Concert**  
March 13
- **Palen Band Days**  
March 13 - 14
- **Film: “Red-Headed Woman”**  
March 26
- **Donor Social**  
March 27
- **MSHSAA Large Ensemble Festival**  
March 27 - 28
- **Four Rivers Conference, Annual High School Art Competition**  
March 31 - April 11

- **CommUNITY Read Program Discussion**  
April 2025

**APRIL**

- **Greenhouse Club Plant Sale**  
April 2025
- **Restaurant at Prairie Dell**  
Intermittent days between Late March/Early May
- **Vivaldi’s Four Seasons**  
April 4
- **Kaffee and Kuchen Concert**  
April 11
- **ECC Art & Design Students, Annual Exhibition**  
April 23 - May 7  
Reception: May 1
- **Annual Poetry Reading**  
April 24
- **Twinspeak: Alan and Mark Ferber Group**  
April 25

**MAY**

- **Ken Ludwig’s Baskerville: A SHERLOCK HOLMES MYSTERY**  
May 1 - 4
- **Pops Concerts**  
May 9

**JUNE**

- **Patrons Kick-Off Event**  
June 12

**JULY**

- **ONCE UPON A MATTRESS**  
July 24 - 27

 Denotes ticketed events



# NIGHT OF THE LIVING DEAD: LIVE!

YOU'LL LAUGH  
TILL YOU CRY.

## NIGHT OF THE LIVING DEAD LIVE!

October 3 - 5 • 7:30 p.m.  
October 6 • 2 p.m.

By: Christopher Bond, Dale Boyer,  
and Trevor Martin

Created by: Christopher Harrison  
and Phil Pattison

Six strangers in a lonely farmhouse, surrounded by brain-eating zombies – what could go wrong? Night of the Living Dead Live is a fun and hilarious re-imagining of George A. Romero's legendary classic. Through a series of multiple endings, the characters are all faced with different issues and challenges which leaves us all wondering: could anyone survive a night of the living dead?

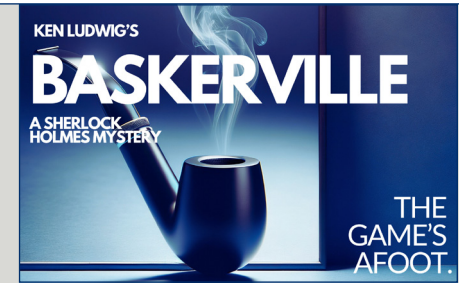
## KEN LUDWIG'S BASKERVILLE: A SHERLOCK HOLMES MYSTERY

May 1 - 3 • 7:30 p.m.  
May 4 • 2 p.m.

By: Ken Ludwig

Get your deerstalker cap on – the play's afoot in this fast-paced adventure about everyone's favorite detective solving his most notorious case.

Sherlock Holmes and Dr. Watson must crack the mystery of "The Hound of the Baskervilles" before a family curse dooms its newest heir. These intrepid investigators try to escape a dizzying web of clues, silly accents, disguises, and deceit as our actors deftly portray more than 40 characters!



## MRS. BOB CRATCHIT'S WILD CHRISTMAS BINGE

NO MORE  
MRS. NICE GUY.

## COCKTAILS AND COLD READS: MRS. BOB CRATCHIT'S WILD CHRISTMAS BINGE

December 12 • 7:30 p.m.

By: Christopher Durang

Join us for themed cocktails and holiday appetizers while enjoying this hilarious staged reading! It's a grown-up look at the perennial Dickens Christmas classic about mean Ebenezer Scrooge. In this version, the Ghost's magic is off, and Scrooge and the Ghost keep showing up at Bob Cratchit's house way too early, where Mrs. Bob Cratchit (who is sick of Tiny Tim and her 20 other children) takes center stage. One night only!

## ONCE UPON A MATTRESS

July 24 - 26 • 7:30 p.m.  
July 27 • 2 p.m.

By: Mary Rodgers, Marshall Barer,  
Jay Thompson and Dean Fuller

Many moons ago in a far-off place, Queen Aggravain decreed no couples could marry until her son, Prince Dauntless, found a bride. Princesses came from far and wide to win the hand of the prince, but none could pass the impossible tests given to them by the Queen until the "shy" swamp princess, Winnifred the Woebegone, showed up. Would she be able to pass the Sensitivity Test, marry her prince, and help Lady Larken and Sir Harry to the altar? Find out in the musical version of The Princess and the Pea!



## THE LIGHTNING THIEF

MEET YOUR NEW HERO.

## THE LIGHTNING THIEF: THE PERCY JACKSON MUSICAL

February 20 - 22 • 7:30 p.m.  
February 23 • 2 p.m.

By: Rob Rokicki and Joe Tracz

When teenager Percy Jackson discovers he's a demigod, he and his friends embark on an epic journey to find Zeus' missing lightning bolt and prevent a war among the gods. Adapted from the best-selling book The Lightning Thief by Rick Riordan and featuring a thrilling rock score, The Lightning Thief: The Percy Jackson Musical is an action-packed mythical adventure worthy of the gods!

For a behind-the-scenes look,  
follow **ECC Theatre** on social media!



ecctheatre



ecctheatre

ecctheatre.com

**Grace Austin**  
Assistant Professor, Communications/Theatre & Theatre Coordinator





### Domestic Violence Awareness Forum

October 17 • 6:30 • HS 126

October is Domestic Violence Awareness Month. Join us for an open discussion on the impact domestic violence has on both the individual and our community. Local agencies will be on hand to answer questions about their services and efforts in this area.



### Partnering with COMMUNITY Read Program

April 2025 • Book title TBD

The Social Sciences department will sponsor an informational session related to the 2025 COMMUNITY Reads book selection. More information coming soon!



**Dr. Coreen Derifield**  
Assistant Professor of Political Science and History



**Timothy Derifield**  
Instructor of Psychology and Sociology



**Dr. Rachel Howard**  
Assistant Professor of Psychology and Sociology



**Dr. Wendy Pecka**  
Associate Professor of Psychology



**Dennis Pohlman**  
Assistant Professor of Government, History and Political Science



### Restaurant at Prairie Dell

Intermittent days between Late March/Early May 2025

The Restaurant at Prairie Dell was a collaboration project with Chef Ted Hirschi and Chef Michael Palazzola. The idea was to give the students as much real life experience in all facets of a food service operation, while remaining in the classroom.

Students are rotated weekly through various roles, like line cook, bakeshop, server, dishwasher, and even dining guest, in order to observe the full experience through multiple lenses. First-year students are the labor force, and are assessed on how well they follow instruction and manage their station. Advanced students help write the menu, and are the management team. This implies a sense of peer management that is essential in climbing any ladder within an organization. It also raises the bar on the students before they graduate. It's one thing to do the work themselves, it is another to get the work done through a team. When service goes so smooth they say, "Chef, we don't need you anymore today," it means the instructors have done their jobs.



### ECC Greenhouse Club Plant Sale

April 2025

The plant sale is driven by the ECC Greenhouse Club which was established in Fall 2022. In the fall, the club decides what seeds to purchase and how many to plant. Seeds are purchased through Baker Creek or through donations from other garden enthusiasts. Students then spend the early spring planting and tending to the crops for the sale in April. Surplus is sold by the Club at the Farmers' Market here on campus. Proceeds are used by the club to offset costs of future endeavors and supplies needed for the greenhouse.

**Chef Michael Palazzola**  
Instructor of Culinary Arts & Program Coordinator





## International Education Week

November 14 - 18

East Central College participates in the celebration of International Education Week by hosting activities and events that encourage students, faculty, and staff to explore and engage with diverse cultures, languages, and perspectives to broaden their horizons and develop a global mindset. These activities may include panel discussions, workshops, guest lectures, cultural music, and dance performances, language learning opportunities, and events highlighting ECC's international student population. A tentative schedule of events for the week includes:

- *Snacks & Stories (stories from international students along with authentic snacks from around the world), Nov 15 & 16 • 12:30 - 1 p.m.*
- *Traditional Dress Display*
- *Virtual Escape Room*
- *World Landmark Photo Backdrops*
- *Travel Photo Contest*
- *Country Flags Display*
- *International Candy Bar*
- *Virtual Foreign Language Lessons (learn a few words in another language!)*

## International Day Celebration

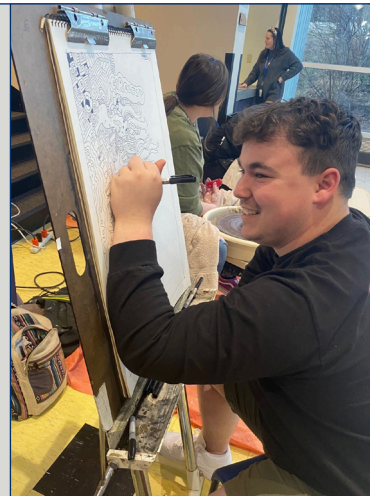
November 16 • 10 a.m. - 1 p.m.

The kick-off event of the week's activities is a Saturday festival that is free, family friendly, and open to the public. Highlights of the festival include cultural dance performances, a display of traditional attire from around the world and, country booths where attendees can explore cultures from around the world through crafts, food, games, puzzles, storytelling, and displays of artifacts and clothing.



**Kami Hancock**  
Instructor of English

**Ellen Aramburu**  
Assistant Professor  
of Spanish



## Donor Social

March 27, 2025 • 5:30 - 7:30 p.m.

Anyone who donates to any East Central College Foundation program is invited to the Donor Social. This event allows donors to see the inner workings of ECC in a new and exciting way! Students from various programs will showcase demonstrations. Past demos have included a dart-throwing robot built by engineering students, sensory play from the education department, delicious food prepared by culinary students, and choral and instrumental performances, to name a few. Drinks and heavy hors d'oeuvres will be provided!

## Patrons Kick-Off Event

June 12, 2025 • 6 - 8 p.m.

All Patrons are invited to the Annual Patrons Kick-Off Event each June to celebrate the upcoming season. This event always has great entertainment, food and drinks. In the past, we have had live student art demonstrations, sneak peek performances from upcoming musicals, a collaborative art project, live bands and so much more! Mark your calendars for next year's event!

# ARTS & HUMANITIES PATHWAY

The Arts and Humanities Pathway introduces students to the history of ideas that have defined cultures through a study of the visual arts, literature, theatre, music, and media. We emphasize connections among the arts and how artistic expression has shaped humanity. Students may choose to pursue an associate of fine arts degree in Fine Art or Music, or an associate of arts degree with tracks in English, Journalism/Mass Media, Music, or Theatre that will prepare them to obtain a bachelor's degree and work in a wide variety of fields.



**ENGLISH**



**MUSIC, AFA**



**THEATRE**



**FINE ART, AFA**



**JOURNALISM  
& MASS MEDIA**



**SPANISH**



**MUSIC, AA**



**PHILOSOPHY  
& RELIGION**

## EXTRA-CURRICULAR/CO-CURRICULAR OPPORTUNITIES AT ECC

The Fine & Performing Arts programs are known throughout the area for their art gallery, band, music, and theatre performances that involve ECC students, ECC alumni, community members, and visiting artists and musicians. The English and Journalism/Mass Media Departments sponsor student publications and writing contests, and organize the ECC Film and Lecture Series.

# JOHN EDSON ANGLIN PERFORMING ARTS CENTER POLICIES

*Please refrain from bringing food or beverages into the John Edson Anglin Performing Arts Center at any time. Photography or any recording is prohibited, unless otherwise indicated. This or any other type of disruption during a performance or event within the center will be handled at the discretion of the Performing Arts Center manager. Thank you for your cooperation. Please contact an usher or the manager should you need assistance while in the John Edson Anglin Performing Arts Center.*

## QUIET, PLEASE!

As a courtesy to the performers and the audience, please keep noise to a minimum during performances. Turn off any cellphones, watch signals, or other electronic devices. The use of any form of text or digital messaging devices is strictly prohibited. Note: cellphones, cameras, laser pointing devices, and recording devices may not be operated in the Theatre.

## LATE SEATING

It is sometimes not possible to seat late patrons in their ticketed seats once a performance has begun. It is distracting to both those on stage and the audience enjoying the show. As a courtesy to the performers and the audience, latecomers will not be seated until the earliest appropriate program break, at the discretion of management. If you arrive late, the ECC ushers will seat you in the first available seats inside the theatre. You may take your reserved seats at intermission. Please note that certain programs are performed without intermission and therefore no late seating can be offered at those events.

## CANCELLATIONS

The College reserves the right to cancel performances due to inclement weather. Information regarding cancellations will be posted on ECC's home page ([eastcentral.edu](http://eastcentral.edu)), social media, and can also be accessed by calling 636-584-6500. Cancellations also will be aired on KLPW (1220 AM) and KTUI (1560 AM). Information regarding rain checks or refunds will be provided when it has been determined if it is possible to reschedule the performance.

## ECC'S POLICY REGARDING CHILDREN

Everyone entering the Theatre must have a ticket. No babies in arms will be admitted. Children under the age of three are discouraged from attending any performances at ECC. Please check with our performing arts manager as to the age appropriateness of any ECC production. (Call 636-584-6720 for inquiries).

## ECC IS TOBACCO FREE

East Central College is committed to providing its students, employees, and visitors with a safe and healthy environment. No tobacco use is permitted anywhere on campus. This includes all common areas, building entrances, athletics fields, walking trails, and parking lots. This policy applies to all faculty, staff, students, employees, contractors, performers, and visitors.

Please be considerate of those in the audience who may have allergies and refrain from wearing cologne and perfume.

## MARQUEE PATRONS

---

*United Bank of Union*

## SPOTLIGHT PATRONS

---

*Elizabeth & Andrew Clary*

*Bonnie & L.B. Eckelkamp*

*Jan & Tim Long*

*Jeannine & John Moroney*

*Richard Steckel*

## PREMIER PATRONS

---

*Bank of Washington*

*Barb & Jon Bauer*

*Amy DeMiere*

*First State Community*

*Bank - Washington, Dutzow,  
Pacific, Sullivan, Gerald*

*Ann & Daryl Hartley*

*Megan & Isaiah Kellogg*

*Carla Kilgore & Alan Klobasa*

*Andrew McAlpin*

*Patricia Prager*

*Marilyn & Keith Stahlman*

*Jessica Oltmann*

*W&M Restaurants Inc  
Taco Bell*

*Zick, Voss, Politte,  
Richardson, Brinker*

## FRONT ROW PATRONS

---

*Vivian & John Anglin*

*Elaine & Roger Archibald*

*Christina & Nathan Ayres*

*Paula Ball*

*Linda Bartle*

*Annette & Ken Bebermeyer*

*Donna & Ken Bodart*

*Ketha & Carl Bounds*

*Bruce Templer*

*Carol & Tom Buescher*

*Linda Carr*

*Citizens Bank*

*DeAnna & Ben Cassat*

*Douetta & Jim Davis*

*Lynda & Joel Doepker*

*Mary Dosch*

*Kerry & Aaron Dilks*

*Jane & Tom Dill*

*Dolan Realtors*

*Julie Marsh & Ted Domino*

*Susie Eckelkamp*

*Gretchen & Tom Farrell*

## FRONT ROW PATRONS (continued)

---

*Mary Eleanor & Sam Farrell*

*Connie Franey*

*Gary R. Lucy Gallery*

*Dee Gibbs*

*Carol & Myron Gruber*

*Barb & Joe Hagan*

*Sallie & Kirk Hancox*

*Havin Red E Mix*

*Cookie & Donald Hays*

*Barbara Jo Hoberock*

*Jennifer & Tim Judd*

*Bridgette & David Kelch*

*Patty & Elmer Kellmann*

*Norma & Armin Klemme*

*Stacy Langan*

*Rosalie Laune*

*Sarah & Steve Leassner*

*Sue Leicht*

*Jeanette & David Long*

*Linda & Ben Lubecki*

*Linda & Robert Mahon*

*McDonald's - Klak Management*

*Susan & George McKee*

*Susan Merlino*

*Nancy & Brad Mitchell*

*Matthew Newman*

*Julie & Jim Perry*

*Penny Pitman*

*Patsy Prugh*

*Rebecca Ralston*

*Paul & Nell Redhage*

*Mary Beth & Gary Rettke*

*Jane & Carl Ridder*

*Harriet & Arnold Sallaberry*

*Diane & Bill Schwab*

*Ann & Paul Schwartzkopf*

*Linda Schneider*

*Michelle & Jim Smith*

*Morgan Spangler*

*Tegner Stokes*

*Julie & Joseph Stroetker*

*Sharon & James Strubberg*

*Sparky & Chris Stuckenschneider*

*Unnerstall & Unnerstall CPA, PC.*

*Debbie & John Vietmeier*

*Robyn & Scott Walter*

*Susan & Doug Warden*

*Debbie & Stan Williams*

*Carol & Bill Winkler*

*Diane & Dale Winters*

*Rui Yao & Eric Park*

*Kathryn & Richard Young*

*Summer Young & Gregory Stotler*

## CENTERSTAGE PATRONS

---

*Carol Aholt*

*Grace Austin*

*Linda Booher*

*Pamela Edgington*

*Elizabeth Dysart*

*Audrey Freitag*

*Georgia Hengstenberg*

*Kay Hucke*

*Pam Kaiser*

*Brenda Morman*

*Roy Morman*

*Carrie Myers*

*Kathleen Rust*

*Mary-Ann Sandusky*

*Mary Beth Schmidt*

*Sullivan Bank*

*Karen Unnerstall*

*Jean Weekley*

*Susan Woodcock*

## UNDERSTUDY PATRONS

---

*Cassidy Desmond*

*Lane & Bill Elcan*

*Margaret Heard*

*Christine Linz*

*Hannah Masek*

*Ann Meyer*

*Charlotte & John Phillips*

*Save a Lot*

# BECOME A PATRON

## MARQUEE PATRON \$4,000+

Includes 10 tickets to all patrons performances and receptions. Headline sponsorship for a show

## GRAND PATRON \$2,500+

Includes 8 tickets to all patrons performances and receptions. Headline sponsorship for a show

## SPOTLIGHT PATRON \$1,000+

Includes 6 tickets to all patrons performances and receptions

## PREMIER PATRON \$500+

Includes 4 tickets to all patrons performances and receptions

## FRONT ROW PATRON \$250+

Includes 2 tickets to all patrons performances and receptions

## CENTERSTAGE PATRON \$125+

Includes 1 ticket to all patrons performances and receptions

## UNDERSTUDY PATRON \$75+

Includes 1 ticket to half of all patrons performances and receptions

All opportunities include early bird ticketing. Recognition in Patrons of the Arts promotional materials for Centerstage memberships and above. For more information, call 636-584-6506 or [foundation@eastcentral.edu](mailto:foundation@eastcentral.edu)

## HOW TO PURCHASE TICKETS & REDEEM BENEFITS



Reserve and purchase tickets online by visiting [eastcentral.edu/tickets](http://eastcentral.edu/tickets)



Contact the ECC Box Office by calling 636.584.6693



Stop by the Cashier's Office in the lobby of Buescher Hall

# JOIN TODAY!

Tear out this form and return to P.O. Box 387 Union, MO 63084  
Email: [foundation@eastcentral.edu](mailto:foundation@eastcentral.edu) • Call: 636-584-6506  
Online: [eastcentral.edu/patrons](http://eastcentral.edu/patrons) or using QR code below

## PERSONAL INFORMATION

Name: \_\_\_\_\_

Address: \_\_\_\_\_

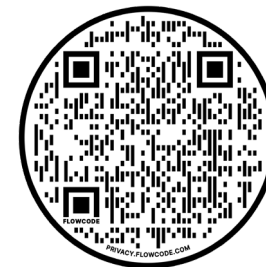
City: \_\_\_\_\_ State: \_\_\_\_\_ Zip: \_\_\_\_\_

Email: \_\_\_\_\_

Phone: \_\_\_\_\_

## SPONSORSHIP LEVEL

- Marquee Patron (\$4,000+)
- Grand Patron (\$2,500+)
- Spotlight Patron (\$1,000+)
- Premier Patron (\$500+)
- Front Row Patron (\$250+)
- Centerstage Patron (\$125+)
- Understudy Patron (\$75+)



## PAYMENT INFORMATION

- Check (payable to ECC Foundation)
- Venmo (@Franklin-Falcon-ECC)
- Online using QR code
- Credit Card

Account Number: \_\_\_\_\_

Exp Date: \_\_\_\_\_ CVV: \_\_\_\_\_ Zip: \_\_\_\_\_

Signature: \_\_\_\_\_

For additional information, please call the ECC Foundation office at 636-584-6506 or email: [foundation@eastcentral.edu](mailto:foundation@eastcentral.edu). The ECC Foundation is a not-for-profit organization and tax-deductible contributions are under section 501(c)3 of the IRS code.

SEASON KICKOFF

# MUSIC FESTIVAL

## EAST CENTRAL COLLEGE



Funky Butt Brass Band

FRIDAY

23

AUGUST

5-8:30PM



WOODSHINE



Pamwe Marimba Band

FREE ENTRY

DRINKS & FOOD AVAILABLE



[www.eastcentral.edu/musicfestival](http://www.eastcentral.edu/musicfestival)

Sponsored By:

ECC  
Music Department

PATRONS OF THE



SUPPORTING THE ARTS THROUGH  
EAST CENTRAL COLLEGE FOUNDATION



EAST CENTRAL COLLEGE